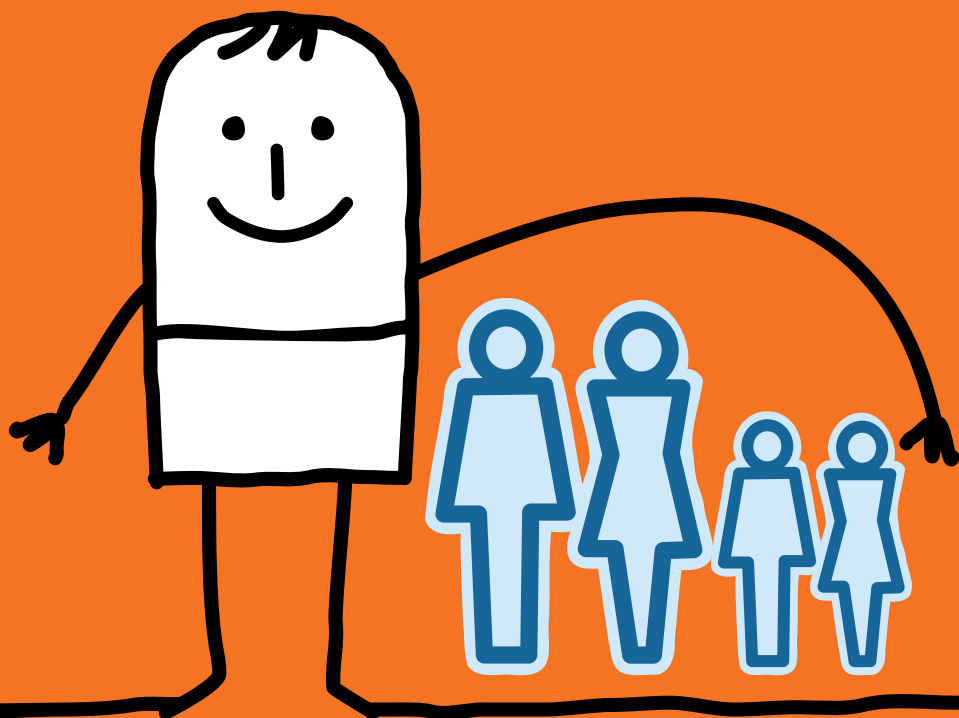


Increases in **Non-Dependant** Deductions



Increases in **Non-Dependant** Deductions

Question

What are Non-Dependant Deductions?

Answer

- A 'non-dependant' is an adult son or daughter or someone else who shares your house with you but is not dependent upon you for support. Housing benefit is reduced by what is known as a 'non-dependant deduction' for each non-dependant.
- The Government has been increasing the level of these deductions from April 2011.
- Non-dependants who are living in your home are expected to contribute to and help you with your housing cost.
- The amount the non-dependant person is expected to pay depends on their individual circumstances and how much they earn or receive in benefits.

Question

How can I find out more information about the new rates?

Answer

- The new rates can be viewed online at www.liverpool.gov.uk
- Arrangements can be made for your rent officer to come and discuss the matter with you via LMH Connect, our Customer Service Centre on 0800 678 1894.
- Visit your local neighbourhood housing office
- The Councils Benefit service freephone 0151 233 3000

 **0800 678 1894**

 LMH CONNECT

Question

Are there any exemptions to the Non-Dependant Deductions?

Answer

Currently non-dependant deductions will not be taken from your housing cost entitlement if:-

- You or your partner are getting the care component of Disability Living Allowance or Personal Independence Payment daily living component or Armed Forces Independence Payment, or registered blind, or
- The non-dependant is on Pension Credit, or
- The non-dependant is under the age of 18 or a full time student, or
- The non-dependant is under 25 years and getting income based Job Seeker's Allowance, Income Support, Income Related Employment and Support Allowance and is in the 'assessment phase' of a new claim.



If you require further information or advice on the welfare reforms please read our help and advice leaflet 7 within this pack.