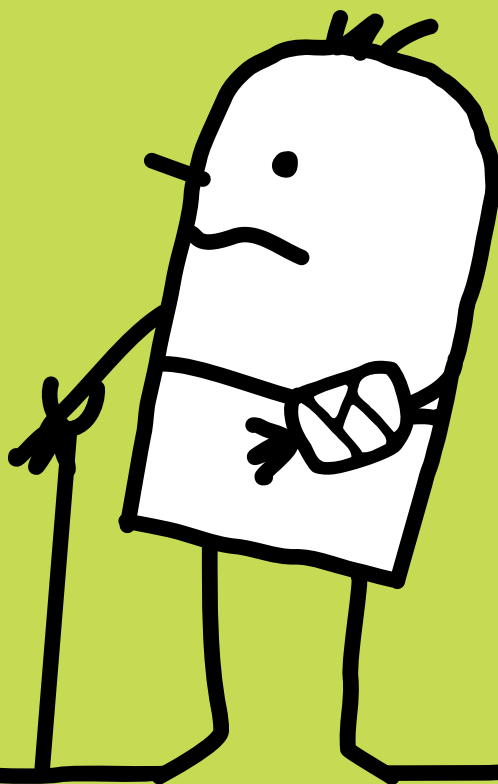


Changes to Incapacity Benefit



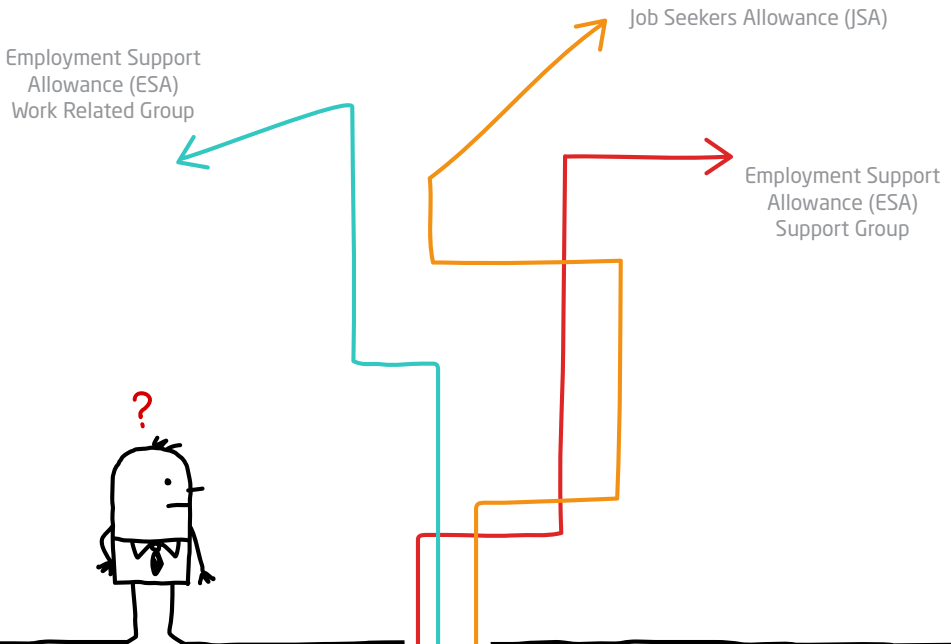
Changes to Incapacity Benefit

Question

What are the changes planned for Incapacity benefit?

Answer

- The Department for Works and Pensions (DWP) are carrying out a national exercise to reassess everyone on Incapacity Benefit.
- People will be transferred onto either Employment Support Allowance (ESA) or Job Seeker's Allowance (JSA).

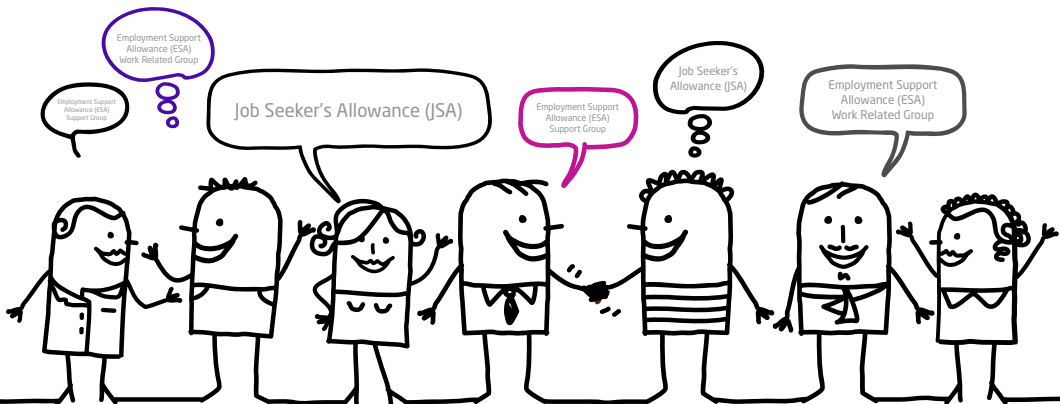


Question

How could this affect people currently in receipt of incapacity benefit?

Answer

- People who are moved onto Employment Support Allowance who are considered to be seriously ill or disabled will be put in the 'Support' group and will receive a higher level of benefit. They will not have to take part in any work related activity as a condition of receiving benefit.
- Everyone else who is moved onto Employment Support Allowance will be placed in the 'Work Related Activity' group and considered as having Limited Capability for Work. If you are placed in this group you will have to take part in work related activity as a condition of receiving benefit.
- People who are found to be fit for work will be invited to claim Job Seekers Allowance.



Question

What happens if people disagree with the Department for Works & Pensions assessment?

Answer

- There is an appeal process and if people find themselves in this situation they should make a claim for Job Seeker's Allowance while the appeal is considered.
- This will ensure Housing Benefit continues to be paid and you do not end up in rent arrears.



If you require further information or advice on the welfare reforms please read our help and advice leaflet number 7.